



Powerful bench-top centrifugation for clinical use in stat labs, medical clinics and offices, veterinarian offices, hospitals and education.

IVDR Designation

Class A, Rule 5a (Article 47, Annex VIII) per IVDF 2017/746

Applications include:

- Clinical chemistry
- Clinical microbiology
- Blood Collection Prep
- Blood Banking
- Immunology
- Pathology

Clinical Centrifuge Specifications

Speed Range	500 – 6,000 rpm
RCF	4,668 x g (max RCF calculated) with typical 15 mL tube
Capacity	8-place 15 mL tube rotor: 120 mL total maximum liquid volume
Run Time Ranges	30 seconds – 60 minutes or continuous

Clinical Centrifuge

Powerful clinical centrifugation in compact bench-top size

Superb Function

- Powerful, Adjustable Speed (500 to 6,000 RPM) can be set in RPM or RCF
- Programmable with memory for up to 8 programs
- Adjustable time (30 seconds to 60 minutes or continuous)
- Rapid acceleration and gentle electronic braking (deceleration time of <60 seconds)
- Digitally controlled brushless motor for accurate speed control and no motor maintenance required

Optimal Design

- Easy to read Digital back-lit display
- Tool-less rotor removal for convenient loading and cleaning
- Clear lid/Viewing porthole to allow non-contact speed verification by non-contact tachometer
- Bench-top Size - compact footprint for workspace use

Built-in Safety

- Safety features help ensure it will not operate when the lid is open, unit is jammed or unit is out of balance
- Manual lid unlock allows users to open lid in case of a power failure and prevents loss of samples

Optimal Design

Powerful centrifugation with a compact bench-top footprint and quiet operation.

Hinged Lid Design

- Provides large clearance for open access to the rotor and tubes for easy load/unload and cleaning

Clear lid/Viewing porthole

- Allows non-contact speed verification by non-contact tachometer

8-Place Removable Rotor

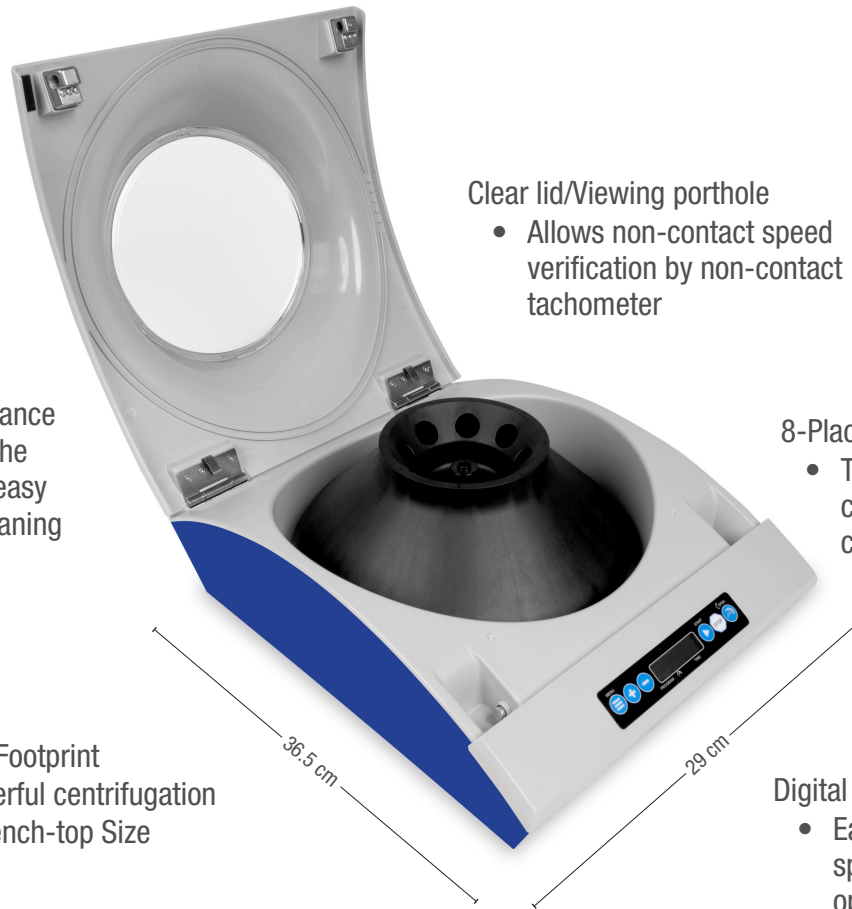
- Tool-less removal for convenient loading and cleaning

Compact Footprint

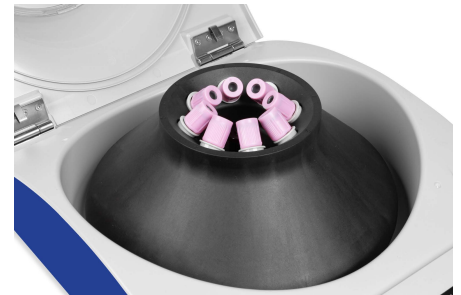
- Powerful centrifugation in Bench-top Size

Digital Back-lit Display

- Easy to read to set time, speed and programmable operations



Versatility



Rotor fits a multitude of tube sizes with the included tube adapters and spacers

- 3 - 10 mL Blood Collection Tubes
- 5 mL MicroCentrifuge Tubes
- 15 mL Conical Centrifuge Tubes

Tube Adapter Sleeve



What you get



Clinical Centrifuge	8 Tube Adapters	1 Low Voltage, Double Insulated Power Adapter with 4 Interchangeable Plugs
8-Place Rotor	24 Tube Spacers	

It's chemically resistant (made from ABS and polycarbonate).


It's easy to clean. It's maintenance free. It's quiet. It's Bench-top Size.



Guaranteed by strict standards that include 3rd party plant reviews and 100% multilevel product inspections. Our equipment reliability is rated 99.7%.

What does that mean to you?
Fewer repairs. Fewer replacements.
And a lower cost of ownership.

Fisherbrand Clinical Centrifuge

Item No.	Color	L x W x H in	L x W x H cm	UOM
17801727	Grey/Blue 	14.4 x 11.5 x 5.8	36.6 x 29.3 x 14.8	1/ea



Specifications

U.S. Design Patent D814,045

Weight	4.5 kg (9.93 lb)	
Operating Temp.	Range 2°C to 40°C	
Max. Relative Humidity	Non-condensing, 80% for temperatures up to 31°C decreasing linearly to 50% R.H. at 40°C	
Electrical	Meets global power and efficiency requirements with grounded cord sets for North America, Japan, EU, UK and Australia	
Power Adapter Rating	Input	100-240 VAC, 2.5A, 50/60 Hz
	Output	12 VDC, 12.5 A, 150W
Centrifuge Rating	Input	12 VDC
	Current (Under load)	Approx. 7.7 A
	Power	Approx. 93W
Certifications	CE, UKCA, RoHS3, WEEE, IVDR* *Class A, Rule 5a (Article 47, Annex VIII) per IVDF 2017/746	

Distributed by Fisher Scientific. Contact us today:

Austria: fishersci.at **Belgium:** fishersci.be **Denmark:** fishersci.dk
Germany: fishersci.de **Ireland:** fishersci.ie **Italy:** fishersci.it
Finland: fishersci.fi **France:** fishersci.fr **Netherlands:** fishersci.nl
Norway: fishersci.no **Portugal:** fishersci.pt **Spain:** fishersci.es
Sweden: fishersci.se **Switzerland:** fishersci.ch **UK:** fishersci.co.uk

© 2023 Thermo Fisher Scientific Inc. All rights reserved.
 Trademarks used are owned as indicated at fishersci.com/trademarks.